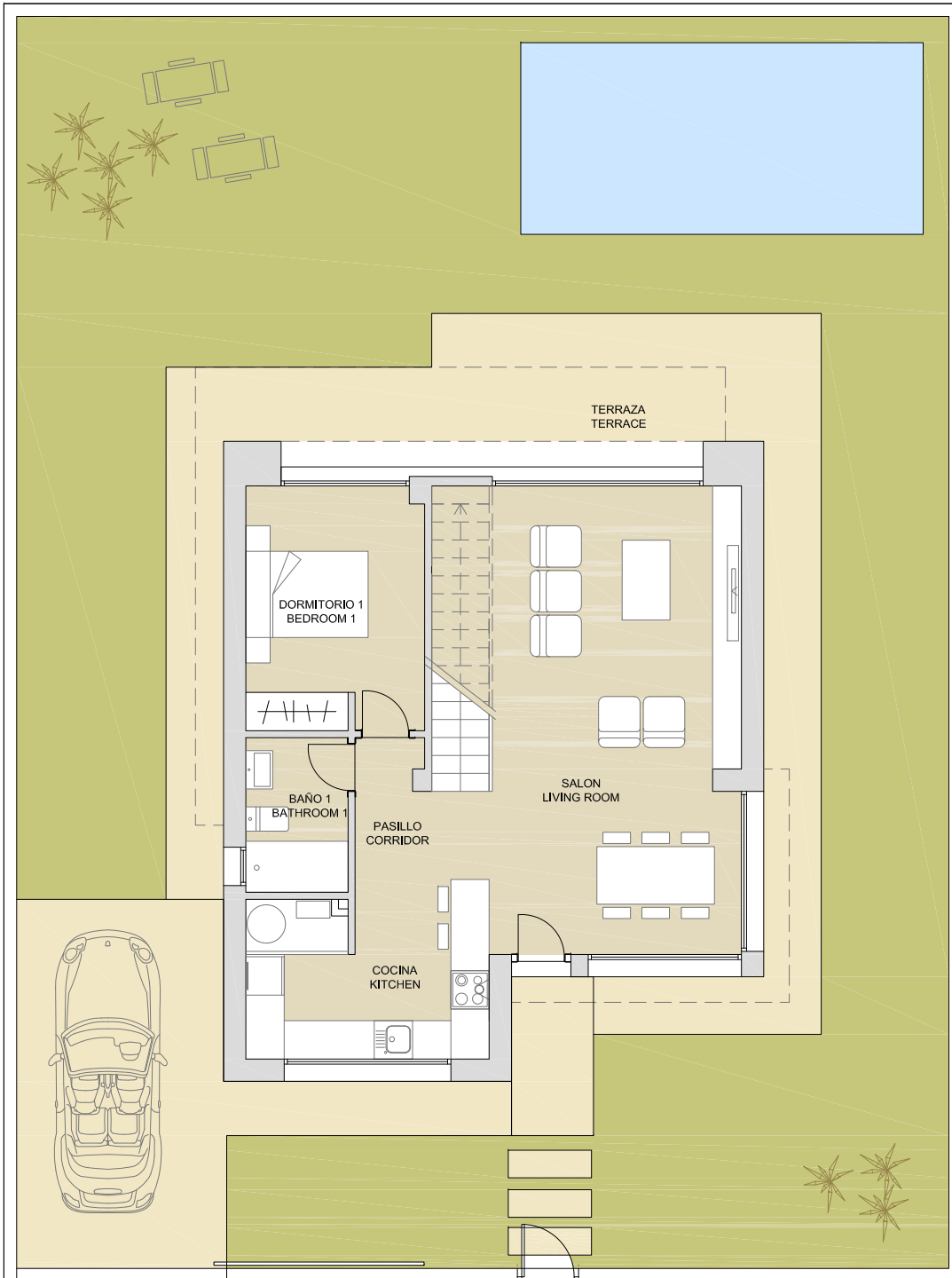


GOLF



SUPERFICIES ÚTILES / OCCUPIABLE AREA

SALON / LIVING ROOM	33.00 m ²
COCINA / KITCHEN	10.20 m ²
DORMITORIO 1 / BEDROOM 1	10.70 m ²
BAÑO 1 / BATHROOM 1	3.95 m ²
PASO / CORRIDOR	2.50 m ²
ESCALERA / STAIRS	6.40 m ²
DORMITORIO 2 / BEDROOM 2	12.20 m ²
DORMITORIO 3 / BEDROOM 3	12.20 m ²
BAÑO 2 / BATHROOM 2	4.80 m ²
BAÑO 3 / BATHROOM 3	5.20 m ²

TERRAZA PB / TERRACE GF	16.90 m ²
TERRAZA P1 / TERRACE 1F	7.00 m ²

RESIDENCIAL LA RODA

LA RODA GOLF - SAN JAVIER

SUPERFICIES CONSTRUIDAS / BUILT AREA

P. BAJA / GROUND FLOOR	74.20 m ²
P. PRIMERA / FIRST FLOOR	52.60 m ²
TERRAZA PB / TERRACE GF	16.90 m ²
TERRAZA P1 / TERRACE 1F	7.00 m ²

TOTAL (S.C.+TERR)	150.70 m ²
-------------------	-----------------------

